

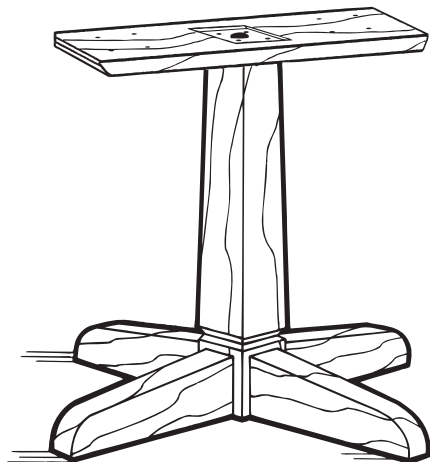
Model #

195Wb Rainier Pedestal Base

Assembly Instructions

Create
A Table

TOP SOLD
SEPARATELY



Congratulations!

This fine piece of furniture will make a gorgeous addition to your home. For the best results, read the Assembly Instructions and Finishing Hints before you begin your project.

IMPORTANT NOTES:

- For normal household use only. **Not** recommended for commercial use.
- Do not climb, sit or stand on this piece of furniture.
- Before you begin your project, completely read the Assembly Instructions and Finishing Hints.
- Store this item: 1- in its box; 2- in a dry place; 3- in temperatures that range from 40° F to 90° F (not on a cold and possibly damp cement floor).
- Periodically inspect your furniture for any loose glue joints, screws or any other problem that might affect the stability of your furniture. Tighten or repair as needed.

DESIGN SUBJECT TO CHANGE WITHOUT NOTICE.



CALL US FIRST! *Do not return this item to the store.*

Service Policy: We will replace any part that is defective, missing or damaged during assembly. Please contact Whittier Wood Products customer service department directly by phone, fax, mail or email for a replacement part.

Hours: Our friendly customer service staff can be reached Monday-Friday 7:00 a.m. to 5:00 p.m. (Pacific Time). You may leave a message 24 hours a day, seven days a week.

To Order: Provide the furniture model number (upper left corner of this page), the part letter, production code, quantity needed, reason for replacement, your full name, address and telephone number.

Parts ship from our Eugene, Oregon factory within one or two business days from the time we receive your request. Please allow five to ten business days for delivery.

800-653-3336 • Outside the U.S. or Canada: 541-687-0213 • Fax: 541-687-2060
www.whittierwood.com • P.O. Box 2827 • Eugene, Oregon 97402, U.S.A.

Whittier
Wood
FURNITURE

P.O. Box 2827
Eugene, OR 97402 USA

Production Code:

VN

01/10

195Wb Rainier Pedestal Base — Parts List

Before you begin to assemble this unit, identify each part and make sure the quantities received match what is on this list.

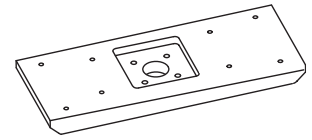
If you need to replace a part, please refer to the following list for the part name and letter code.



Ab — Foot — Qty. 4

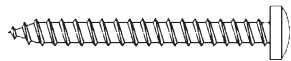


B — Pedestal — Qty. 1



C — Top Support — Qty. 1

Hardware



D — #12 x 2" Pan Head Screw — Qty. 8 — Qty. 4



E — 5/16" x 3" Lag Bolt — Qty. 4



F — 5/16" Flat Washer — Qty. 4



G — 3/8" x 4-1/2" Hanger Bolt — Qty. 4 (inserted)



H — Curved Washer — Qty. 4

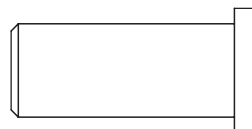


I — 3/8" Hex Nut — Qty. 4

J — 1/2" x 2-1/4" Wood Dowel — Qty. 4 (inserted)

L — Adjustable Glide — Qty. 4 (inserted)

N — Insert Nut — Qty. 4 (inserted)



M — Plug — Qty. 1

195Wb Rainier Pedestal Base Assembly Instructions

TOOLS REQUIRED:

Phillips Screwdriver, 5/32" Drill Bit, Drill, Adjustable Wrench, Padded Hammer or Rubber Mallet, Wood Glue.
Use a Phillips bit on a variable speed drill to make assembly easier and eliminate the need to pre-drill.

We recommend that you finish the top and pedestal before you assemble your table.

Note: Rub a bit of soap on the threads of the lag bolts to help them screw in more easily.

1. Apply a thin layer of glue in the large hole and the top of the Pedestal (B).

Thoroughly gluing the Pedestal to the Top Support is CRUCIAL.

To secure the Top Support (C) to the Pedestal, start the four Lag Bolts (E) and Flat Washers (F) into the Top Support and align the Lag Bolts to the predrilled holes in the Pedestal. Tap the Plug (M) down through the large hole in the Top Support and all the way into the Pedestal. The top of the Plug must be below the surface of the Top Support. Firmly tighten the Lag Bolts. See Figure 1.

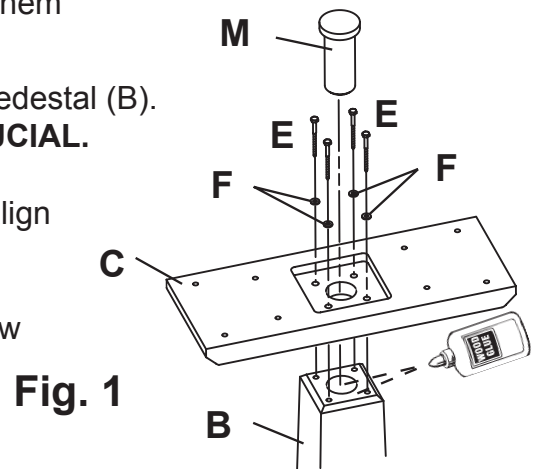


Fig. 1

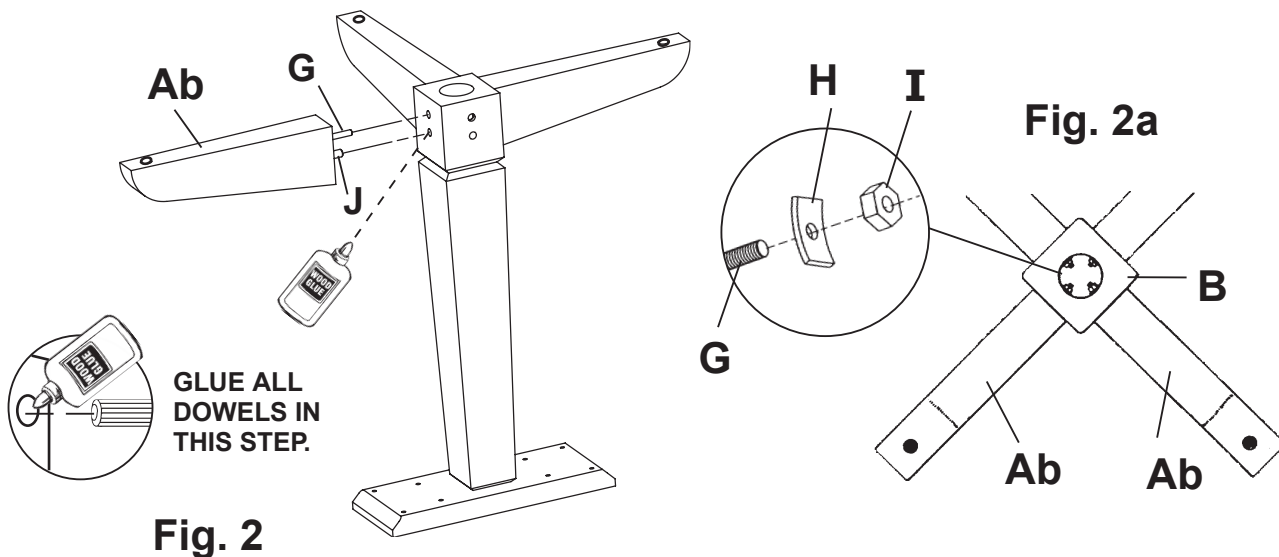
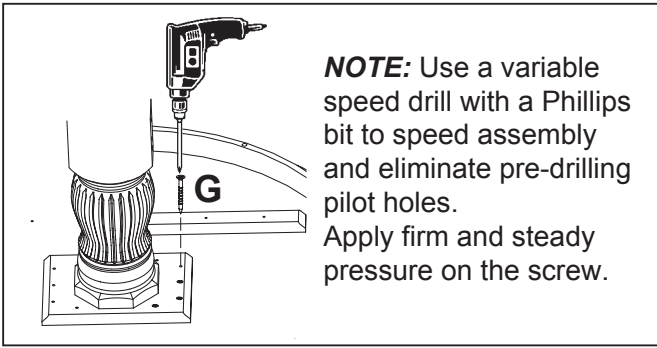


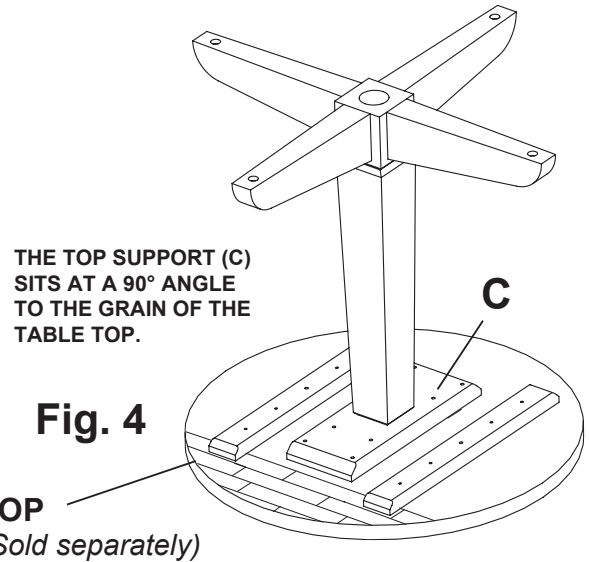
Fig. 2

2. Place the pedestal assembly upside down on a clean, protected surface. Spread a thin layer of glue in the top hole in the base of the pedestal. Insert the Dowel (J) into the upper hole and the Hanger Bolt (G) into the lower hole and gently tap with a rubber mallet. Quickly wipe away any excess glue. Place a Curved Washer (H) and a 3/8" Hex Nut (I) over the Hanger Bolt and tighten firmly. Repeat for the other three feet. See Figures 2 and 2a.



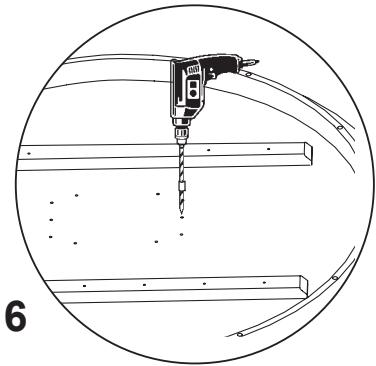
- Place the table top face-down on a clean, protected surface.

Center the base on the top. It is important that the wood grain of the Top Support (C) is placed at a right angle (opposite) to the direction of the wood grain of the table top. This will prevent possible warping of the table top. See Figure 4.



- Place the eight #12 x 2" Pan Head Screws (D) into the holes of the Top Support and tap them lightly with a hammer to center punch or mark the screw locations on the bottom side of the table top.

- Move the table base away and using a 5/32" drill bit (or smaller), drill the eight pilot holes you marked in step 4. Drill the holes 3/4" deep. To prevent yourself from accidentally drilling through the table top, mark the drill bit with a piece of tape 3/4" from the tip. See Figure 6.



- Place the table base back into position and solidly tighten the eight #12 x 2" Pan Head Screws (D) into the table top. If you rub a little bit of soap on the threads, it will help the screws go in more easily.

- Turn the table right-side up and place it in the desired location. To level the unit, rotate the adjustable glides found on the bottoms of the feet.

Finishing Hints

Choosing the Finish:

1. Choose a finish that will meet your expectations for the product you are finishing. Are you matching existing furniture or do you want a “natural” finish? Is the piece to be functional, decorative or both? The answers to these questions may affect the type of finish you choose.
2. Use products of the same brand to ensure compatibility of products.
3. **ALWAYS** follow the stain manufacturer’s instructions. Alder is a porous hardwood and often looks best when following the finishing directions for softwoods.
4. We recommend using a wood conditioner under oil base stains.
5. Work in a well ventilated and well lit area.

Getting Started:

1. **Assembly Instructions may contain special finishing information for that item.** Read both the Assembly Instructions and these Finishing Hints completely before beginning.
2. Sand the entire piece, using #220 grit sandpaper. Sand with the grain of the wood on flat surfaces and opposite the grain on turnings. Some parts are plywood. Be careful not to sand through the veneer. End grain (table top ends, seat edges, grooves on turnings, etc.) accepts more stain. Extra sanding in these areas with a #320 grit sandpaper will reduce stain absorption, creating a more evenly stained piece.
3. When sanding is completed, wipe the surface of your furniture with a cloth or tack rag. Make sure the item is free of dust before proceeding.
4. For most products, we recommend preparing and staining the wood prior to assembly. Due to the assembly procedures for chairs, rockers and stools, we recommend assembling these items prior to finishing.
5. If you do choose to finish chairs, rockers or stools prior to assembly, it is **imperative** that you protect the ends of dowels and spindles, and the mortise holes where the wood is joined, from finishing products. Use masking tape around the ends, being careful to cover only the section that will be inserted (remove the tape after the finish has dried and before the furniture is assembled). Wood glue **will not bond** if finishing products are present. If you do get finishing product in these areas, it must be removed to ensure proper bonding.
6. If glue is used in assembly of your furniture, remove any excess glue spots or drips before finishing. Wood surfaces with glue **WILL NOT** accept stains, and will leave a light spot. To remove glue, wipe off as much as possible while wet, then lightly sand the surface until the remaining glue is removed.

Basic Equipment:

- Rubber gloves
 - Rags
 - Paper towels
 - Q-tips
 - Tack cloth
 - Drop cloth
 - Paint brushes
(bristle and foam)
 - #220 & #320
sandpaper
 - Mineral spirits
 - Masking Tape
-

Gluing Hints:

These are general hints. Refer to the instruction sheet for detailed information on gluing your specific product. Your unit may not need glue.

1. We **strongly** recommend that you first lay out all the parts and familiarize yourself with how they fit together before assembling with glue. Glue will set up quickly and can cause damage to the parts if you try to reposition any that have been assembled incorrectly.
2. Glue usually takes several hours to cure (or harden) but it will sometimes set up, or grab, in several seconds. Therefore, once you begin final assembly, be sure to proceed quickly and diligently.

Gluing Hints (cont.)

3. We recommend that you use a good wood glue, such as **Elmer's Wood Glue** or **White Glue, Titebond Wood Glue** or the equivalent; unless the instructions call for a special type such as a slow drying epoxy glue. Carefully read the glue manufacturer's label and follow all instructions.
4. Be sure the holes are clear of any dust so the glue will have a clean surface to adhere to. Blowing in the holes before gluing is recommended, **but be sure to protect your eyes.**
5. **Avoid getting glue on surfaces to be finished!** Most stains or finishes will not penetrate where glue has been spilled. Wet glue can be wiped off with a damp cloth. Follow with a light sanding of the area to ensure a proper finish.
6. **Do not over glue!** It is important to apply an even coat inside all holes and slots. Use a small dowel or pencil to spread glue evenly around the inside of the holes. Because of the fit of the spindles or dowels in the holes, the spindle or dowel pushes glue to the bottom of the hole. If too much glue is used, it will fill the hole and not allow the spindle or dowel to go all the way in.

Staining:

1. Read and follow label directions. Stir stain well before starting.
2. Test stain on an inconspicuous spot on your project, or use the sample chip if one is provided. The sample chip must be sanded in the same way as your furniture kit to ensure the piece will accept the stain similarly. Put at least one coat of your top coat over the stain sample, as it also affects the look of the stain. **Test every type of wood that is in your kit.** Some of our products include more than one type of wood, which may react differently to the stain color. Sample chips for the different woods may be included. It may be necessary to add a second coat of stain to lighter woods to match the darker woods in your kit.
3. Apply stain with a poly brush or lint-free cloth. Apply stain over a small area and wipe off excess. Working in small areas will make the color easier to control.
4. Q-tips are ideal for hard to reach areas.
5. Allow to dry thoroughly before proceeding.

Applying the Top Coat:

No top coat is required if using paint.

1. **Always read and follow all label directions.** Stir your finish coat gently, **do not shake.** It will create bubbles that are hard to remove.
2. **All surfaces** (including the underside of table tops and inside drawers) **must be sealed with at least one layer of a top coat.** This will help minimize wood swelling, shrinkage, warping and cupping due to changes in moisture content or temperature.
3. We recommend that you **apply a minimum of two coats when using polyurethane or varnish (especially on all table top and work surfaces).** Sand lightly between coats using a #320 grit sandpaper or 00 steel wool for the smoothest possible finish.
4. Some water-based finishes tend to raise the grain slightly. This can be easily controlled with this sanding step. However, do not use steel wool when using water-based finishes. Strands of steel fiber caught in the wood can cause rust spots when coated with any water-based product.

Painting:

1. For best results when painting, first coat the wood with a primer. An oil based primer would be best for a smooth finish. If you do not wish to use a solvent based primer, a water based primer would work almost as well.
2. Buy a quality brand paint. You may use a satin, semi-gloss, or gloss sheen. Apply a second coat for a smooth finish. Lightly sand between coats using a #320 grit sandpaper, so that the second coat will bond well. Repeat as desired.
3. Since there is such a variation between paint manufacturers, refer to your paint supplier for specific advice on using the paint that you purchase.